



M. HOLLAND & SONS
CONSTRUCTION, INC.

DESIGN & CONSTRUCTION

COMMERCIAL CONSTRUCTION PORTFOLIO





COLONIAL FEDERAL SAVINGS BANK
"Your neighborhood bank!"



**M. HOLLAND & SONS
CONSTRUCTION, INC.**

DESIGN & CONSTRUCTION



COLONIAL FEDERAL SAVINGS BANK Holbrook, MA

This 3500 sf site was built from the ground up.





**COLONIAL FEDERAL
SAVINGS BANK**
"Your neighborhood bank!"



**M. HOLLAND & SONS
CONSTRUCTION, INC.**

DESIGN & CONSTRUCTION

COLONIAL FEDERAL SAVINGS BANK Quincy, MA

This branch received a full interior renovation while the bank remained open. It consisted of new millwork, flooring, ceiling, lights & paint.





M. HOLLAND & SONS
CONSTRUCTION, INC.

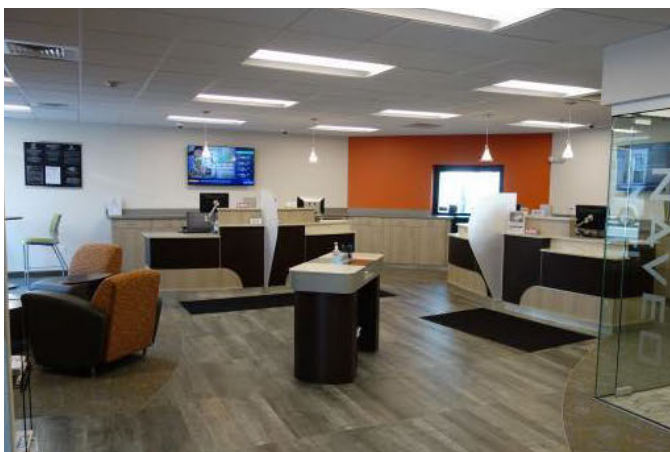
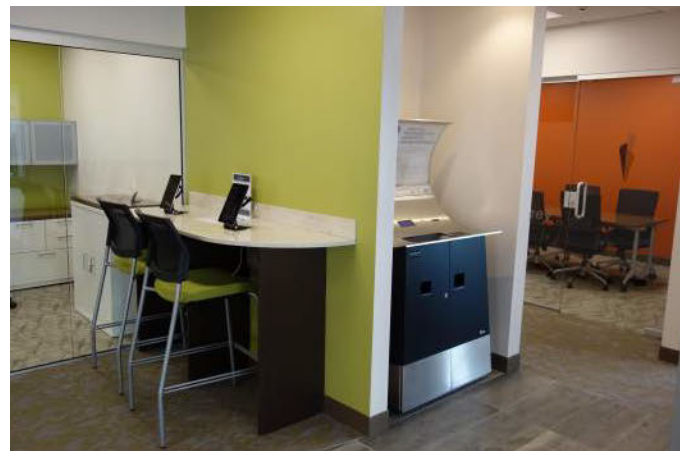
DESIGN & CONSTRUCTION



NAVEO CREDIT UNION

Cambridge, MA

This 3,500 square foot bank received an interior renovation. It consisted of a new ATM, teller line, flooring, paint, ceiling & lighting.



ROCKLAND TRUST



M. HOLLAND & SONS
CONSTRUCTION, INC.

DESIGN & CONSTRUCTION



ROCKLAND TRUST West Roxbury, MA

This 2,000 square foot bank received an interior renovation. It consisted of new teller line, flooring, paint & ceiling lighting.



ROCKLAND TRUST



M. HOLLAND & SONS
CONSTRUCTION, INC.

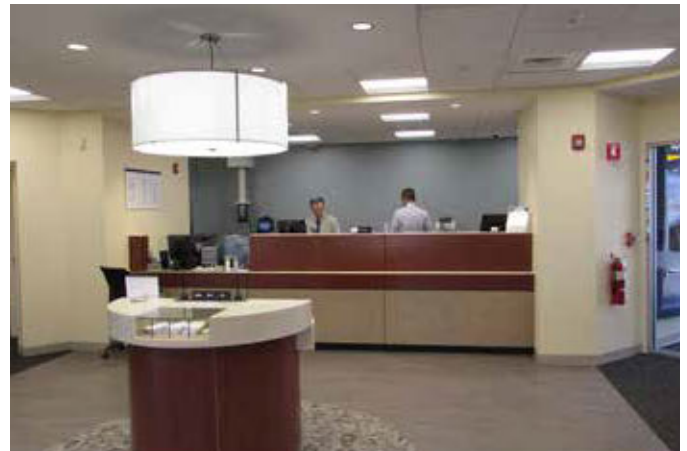
DESIGN & CONSTRUCTION



ROCKLAND TRUST

Waltham, MA

This 7,900 square foot 2 story site received a complete interior renovation. It consisted of new teller line, glass offices, flooring, ceiling, lights & paint.



ROCKLAND TRUST



M. HOLLAND & SONS
CONSTRUCTION, INC.

DESIGN & CONSTRUCTION

ROCKLAND TRUST

Braintree, MA

This 3,500 square foot branch received an interior renovation. It consisted of finishes, teller line, glass offices, flooring, ceiling, lights & paint.



ROCKLAND TRUST



M. HOLLAND & SONS
CONSTRUCTION, INC.

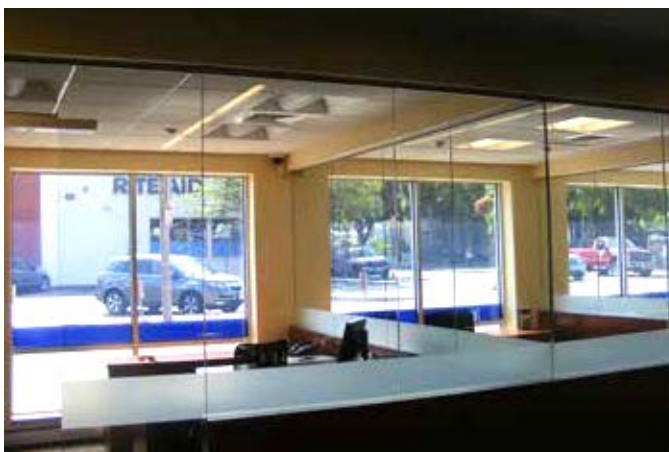
DESIGN & CONSTRUCTION



ROCKLAND TRUST

Somerville, MA

This 4,500 square foot site received a complete interior renovation. It consisted of new windows, doors, millwork, glass offices, carpet, ceiling, lights & paint.



ROCKLAND TRUST



M. HOLLAND & SONS
CONSTRUCTION, INC.

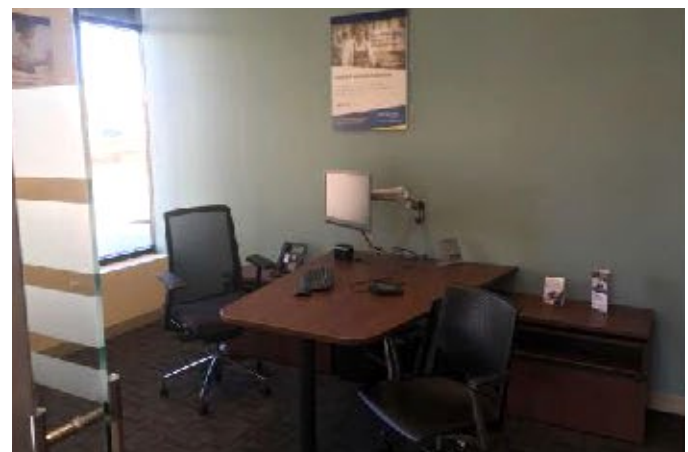
DESIGN & CONSTRUCTION



ROCKLAND TRUST

Newton, MA

This 2,500 square foot site received a complete interior renovation. It consisted of new windows, doors, millwork, glass offices, carpet, ceiling, lights & paint.





M. HOLLAND & SONS
CONSTRUCTION, INC.

DESIGN & CONSTRUCTION



SOUTH SHORE SAVINGS BANK Stoughton, MA

This 3,500 square foot site was
built from the ground up.





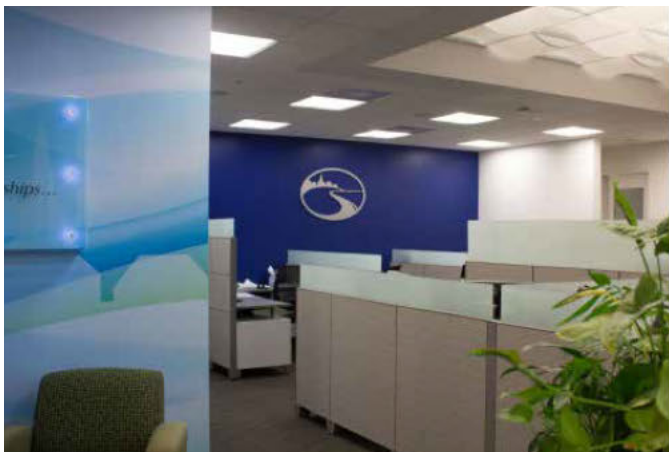
M. HOLLAND & SONS
CONSTRUCTION, INC.

DESIGN & CONSTRUCTION



SOUTH SHORE SAVINGS BANK Hingham, MA

This 3,000 square foot site received a full gut remodel to accommodate new branch.





M. HOLLAND & SONS
CONSTRUCTION, INC.

DESIGN & CONSTRUCTION



SOUTH SHORE SAVINGS BANK Poole's Corner, Weymouth, MA

This 2,700 square foot site received
a full interior renovation.





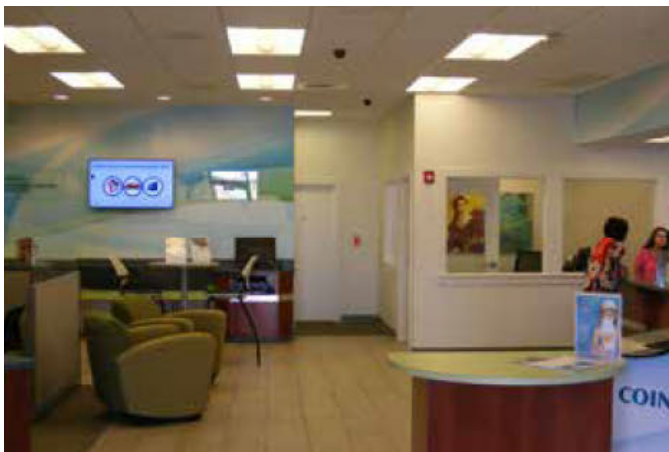
M. HOLLAND & SONS
CONSTRUCTION, INC.

DESIGN & CONSTRUCTION



SOUTH SHORE SAVINGS BANK Shaw's Plaza, Weymouth, MA

This 2,600 square foot site received
a full interior renovation.





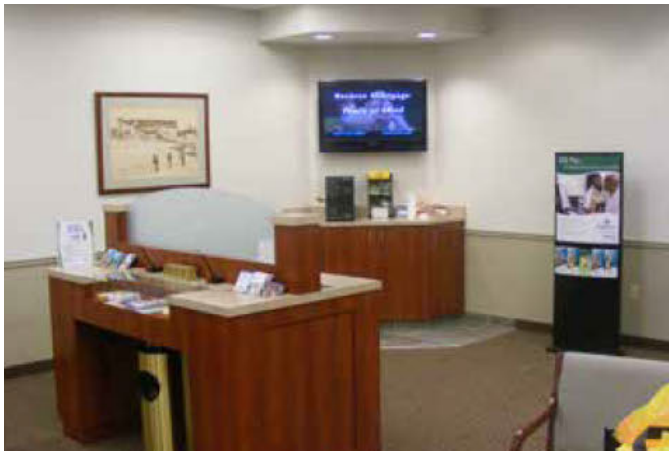
M. HOLLAND & SONS
CONSTRUCTION, INC.

DESIGN & CONSTRUCTION



SOUTH SHORE SAVINGS BANK Weymouth, MA

This 2,400 square foot site
received a full interior renovation.





M. HOLLAND & SONS
CONSTRUCTION, INC.

DESIGN & CONSTRUCTION



SOUTH SHORE SAVINGS BANK Bridgewater, MA

This 2,400 square foot site received
interior cosmetic renovations.





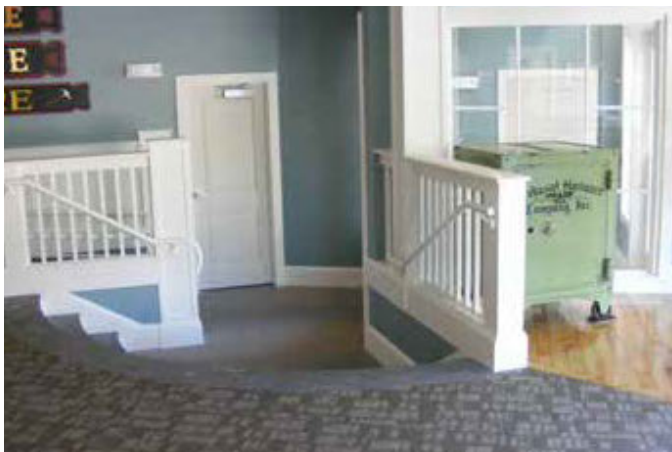
M. HOLLAND & SONS
CONSTRUCTION, INC.

DESIGN & CONSTRUCTION



PILGRIM BANK Cohasset, MA

This 7,500 square foot site received a complete gutting and reconstruction including a new elevator and addition of a third floor.



Hingham Federal Credit Union



M. HOLLAND & SONS
CONSTRUCTION, INC.

DESIGN & CONSTRUCTION



HINGHAM FEDERAL CREDIT UNION Hingham, MA

This 5,000 square foot building was completely gutted and remodeled with the addition of a drive up.





M. HOLLAND & SONS
CONSTRUCTION, INC.

DESIGN & CONSTRUCTION



SOUTH COASTAL BANK Quincy, MA

This 4,000 square foot site received a complete interior + exterior renovation. It consisted of new windows, doors, millwork, glass offices, flooring, ceiling, lights & paint.





M. HOLLAND & SONS
CONSTRUCTION, INC.

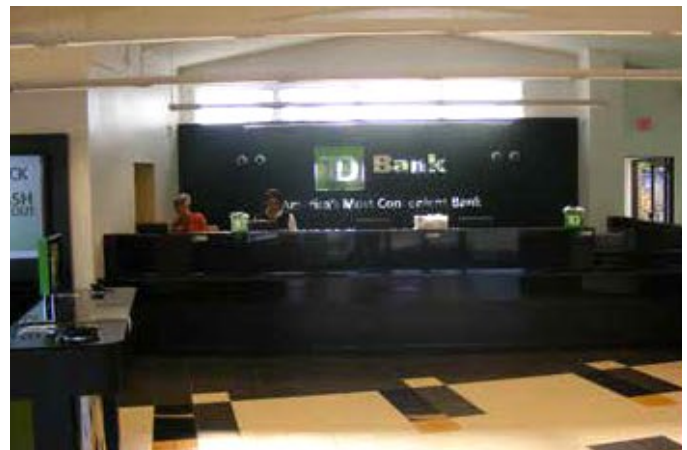
DESIGN & CONSTRUCTION



TD Bank

Harwich, Hyannis, Sandwich,
& South Yarmouth, MA

These projects ranged between
2,400 - 3,500 square foot sites.
They each received a complete
gutting and reconstruction while
the bank remained open.





M. HOLLAND & SONS
CONSTRUCTION, INC.

DESIGN & CONSTRUCTION



TD BANK Revere, MA

This 3,500 square foot site received a complete gutting and reconstruction while the bank remained open.





M. HOLLAND & SONS
CONSTRUCTION, INC.

DESIGN & CONSTRUCTION



TD BANK Easton, MA

This 2,300 square foot branch infill was a “Vanilla Box” that was remodeled with the addition of a drive-up in the rear of the building.





M. HOLLAND & SONS
CONSTRUCTION, INC.
DESIGN & CONSTRUCTION

CITIZENS BANK
Needham & Milton, MA

Both of these sites received interior remodels. The Milton site received a new teller line.





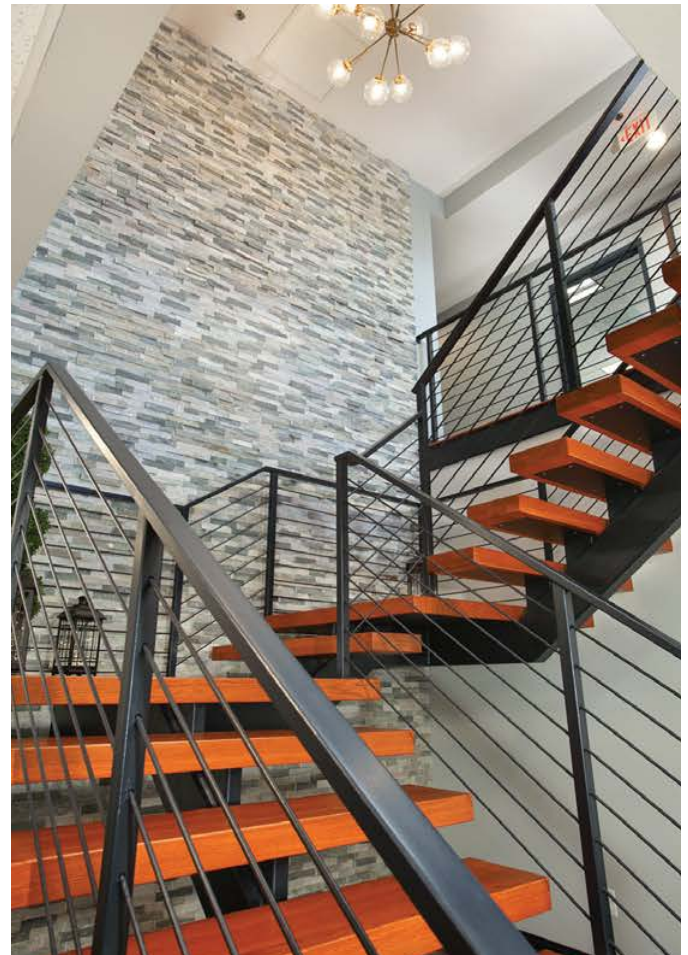
M. HOLLAND & SONS
CONSTRUCTION, INC.

DESIGN & CONSTRUCTION



LEONARD, MULHERIN & GREENE, P.C. Weymouth, MA

Was full remodel of existing 5,000 SF building included new office glass, interior stair case, flooring, paint, ceilings and new millwork





M. HOLLAND & SONS
CONSTRUCTION, INC.

DESIGN & CONSTRUCTION



THE UNITED CHURCH OF CHRIST Norwell, MA

This 17,000 sf church received a new elevator shaft and machine room built from ground up. It also received a full interior renovation as well as an updated commercial kitchen.

